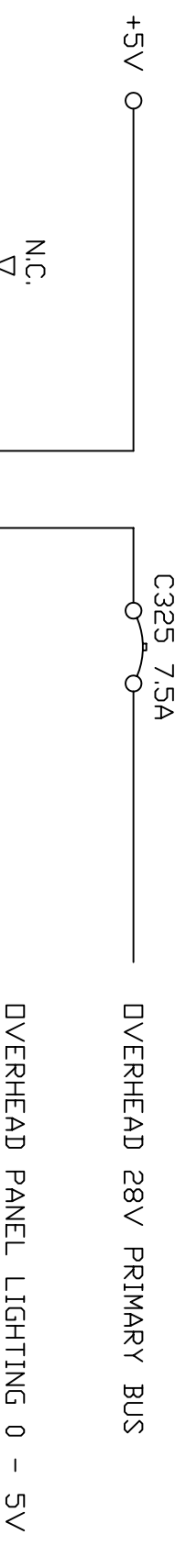
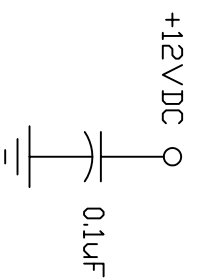


NOTES:

ALL UNUSED INPUTS/OUTPUTS IN
AMP CPC SERIES 1 CONNECTOR P/N
206150-1 SHALL BE UNPINNED
A "KEYING PLUG" AMP PART NUMBER
200821-1



- P5 Dvhd PNL LP "T"
- P5 Dvhd PNL LP "Lower"
- P5 Dvhd PNL LP "Dome LT Ctl"
- P5-12 LE Flap/Stat Ctl Pnl
- P6-68 Eng ctl Pnl

OVERHEAD PANEL LIGHTING 0 - 5V

- P5-4 APU EGT IND
- P5-11 Eng & Wing Anti-Ice Pnl
- P5-4 AC System & APU Pnl
- P5-4 AC System & APU Pnl
- P5-13 Elec Meter Battery Pnl
- P5-5 Gen Drive & STBY Pwr Pnl

OVERHEAD PANEL LIGHTING 0 - 5V

- P5-70 IRS Display Pnl
- P5-70 IRS Display Pnl
- P5-69 IRS Mode Pnl
- P5-15 DXY PRESSURE IND
- P5-15 Dxy System Pnl

OVERHEAD PANEL LIGHTING 0 - 5V

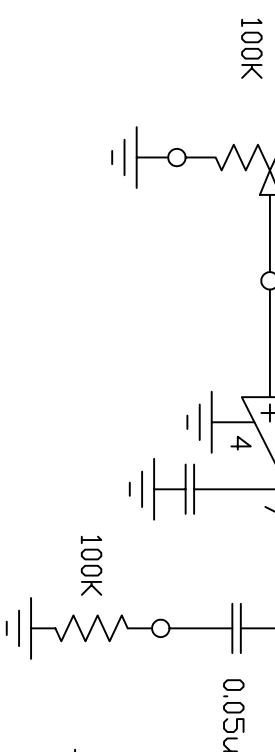
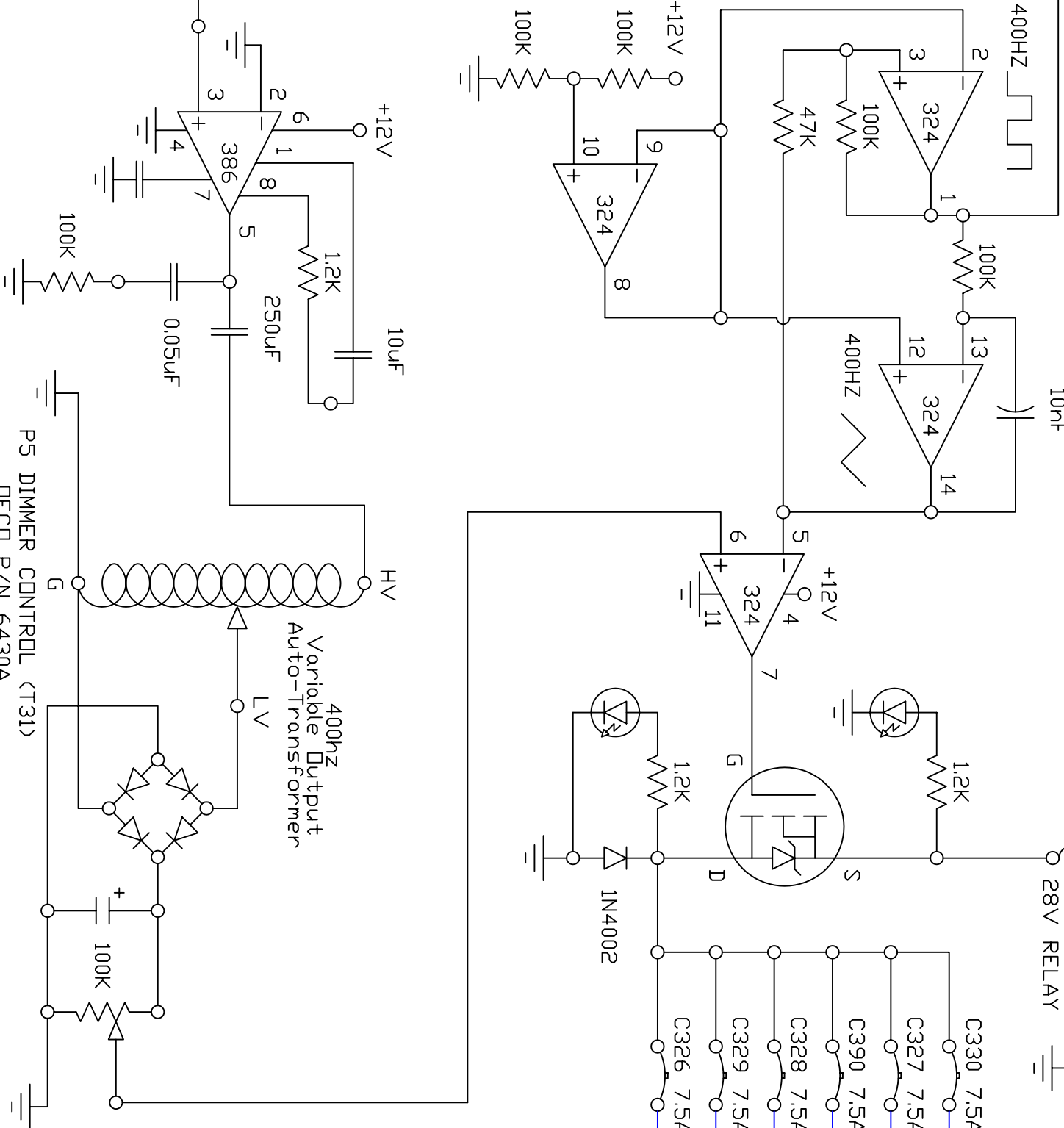
- P5-9 Window Heat Pnl
- P5-16 NS1 Cabin Alt IND
- P5-8 Hyd Pumps Pnl
- P5-16 Cabin Alt Pnl
- P5-16 N55 Cabin Rate Climb IND

OVERHEAD PANEL LIGHTING 0 - 5V

- P5-17 Cabin Temp Pnl
- P5-17 N11 Cabin Temp IND
- P5-17 M392 Cabin Temp CTL
- P5-17 M393 Cabin Temp CTL
- P5-10 Air Cond Pnl
- P5-10 N12 Dual Press IND
- P5-6 Cabin Press Sel Pnl

OVERHEAD PANEL LIGHTING 0 - 5V

- P5-28 Nav Pnl
- P5-2 N42 Fuel Temp IND
- P5-3 Flt Ctl Pnl
- P5-2 Fuel System Pnl



P5 DIMMER CONTROL (T31)
DECD P/N 6430A